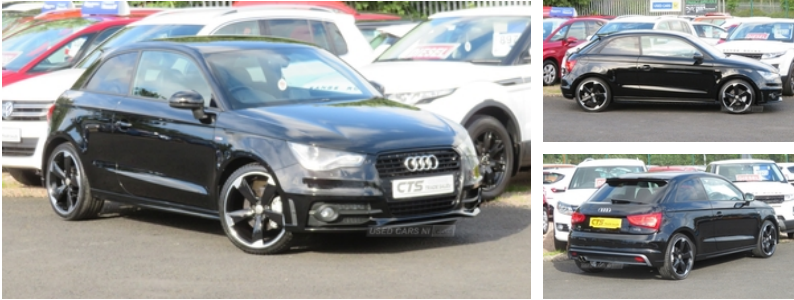


Audi A1 1.4 TFSI 140 Black Edition 3dr | Oct 2013

£6,475

****S LINE BLACK EDITION** JUST SERVICED WITH T BELT CHANGED ***



A1 1.4 TFSI S LINE BLACK EDITION 3 DOOR IN GLEAMING BLACK WITH 94310 MILES, POWER STEERING, ELECTRIC WINDOWS, REMOTE CENTRAL LOCKING WITH ALARM, ELECTRIC MIRRORS, HALF BLACK LEATHER INTERIOR, AIRCON, REMOTE RADIO/STERO/CD, CRUISE CONTROL, TRIP COMPUTER, TRACTION CONTROL, AUTO LIGHTS AND WIPERS, PRIVACY GLASS, 2 KEYS, SERVICE HISTORY AND JUST SERVICED WITH T BELT CHANGED, XENON LIGHTS, ALLOYS, FOGS, COLOUR CODED, PDC, BOOT SPOILER, LADY OWNER, REAL GOOD CLEAN TIDY CAR, FINANCE AVAILABLE, WARRANTY PROVIDED, *** ALL MAJOR CREDIT AND DEBIT CARDS ACCEPTED ***

Vehicle Features

3 spoke leather multifunction S Line steering wheel, 18" 5 arm rotor alloy wheels in titanium finish, ABS/EBD, Adjustable rear head restraints, Black cloth headlining, Black styling pack - A1, Body colour door mirrors with integral indicators, Body coloured bumpers, Door sills with aluminium inlays, Driver's information system, Driver/Front Passenger airbags, Driver and passenger side airbags, EDL, Electric adjustable door mirrors, Electric front windows, Electronic climate control (ECC), ESP with ASR, First aid kit, Front and rear seatbelt reminder, Front fog lights, Front head restraints, Front passenger airbag deactivation, Front seats - 'Easy Entry', Head airbags, headlight washers and LED day running lights, Heated door mirrors, Heated rear windscreen, Heat insulating glass, Height adjustable front seats, Isofix attachments on rear seats, Leather handbrake, LED interior lighting pack - A1, Locking wheel bolts, Lumbar adjustment for front seats, PAS, Privacy glass, Rain and light sensors, Rake/reach adjustable steering wheel, Rear wiper, Remote control central locking, Roof spoiler, Service interval indicator, S Line body styling, S line sports suspension, Split folding rear seats, Thatcham category 1 alarm + immobiliser, Tyre repair kit, Voice control system, Warning triangle, Xenon plus headlights with auto range adjustment

Miles:	94310
Fuel Type:	Petrol
Transmission:	Manual 5 speed
Colour:	Black
Engine Size:	1395
CO2 Emission:	109
Tax Band:	B (£20 p/a)
Body Style:	Hatchback
Insurance group:	22E
Reg:	KXZ9225

Technical Specs

DIMENSIONS	
Length:	3954mm
Width:	1740mm
Height:	1416mm
Seats:	4
Luggage Capacity (Seats Up):	270L
Gross Weight:	1560KG
Max. Loading Weight:	450KG

PERFORMANCE & ECONOMY	
Fuel Consum. (Urban Cold):	48.7MPG
Fuel Consum. (Extra Urban):	68.9MPG
Fuel Consum. (Combined):	60.1MPG
Fuel Tank Capacity:	45L
Number Of Gears:	6 SPEED
Top Speed:	132MPH
Acceleration 0-100 km/h:	7.9s
Engine Power BHP:	138.1BHP

